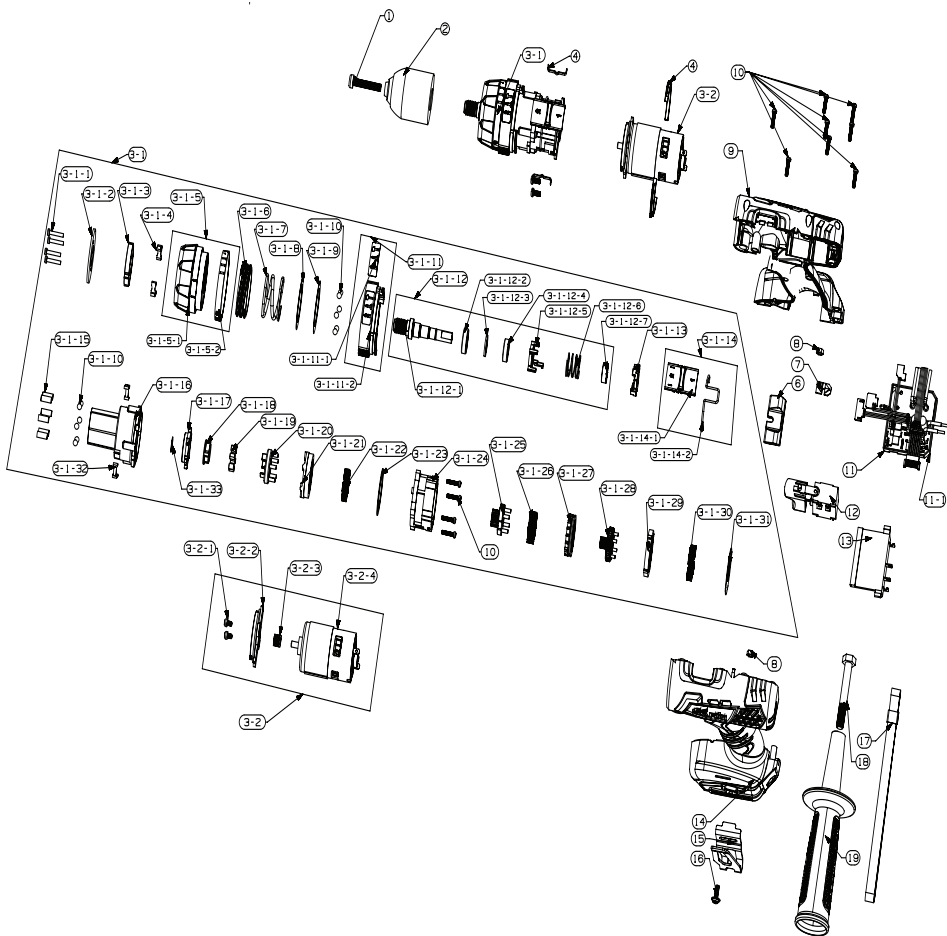


EXPLODED VIEW OF CORDLESS DRILL RDP-SCDI20S



| | | |
|----------|--|----|
| 1 | screw 6*25 | 1 |
| 2 | chuck | 1 |
| 3 | gear box assy | 1 |
| 3-1 | gear box | 1 |
| 3-1-1 | screw ST3*25 | 4 |
| 3-1-2 | fixing support pressing plate | 1 |
| 3-1-3 | fixing support of torsion spring plate | 1 |
| 3-1-4 | torque adjusting spring | 2 |
| 3-1-5 | torque adjusting ring assy | 1 |
| 3-1-5-1 | torque adjusting ring1 | 1 |
| 3-1-5-2 | torque range circle | 1 |
| 3-1-6 | torque adjusting inner ring | 1 |
| 3-1-7 | torque spring | 1 |
| 3-1-8 | torque adjusting washer ring | - |
| 3-1-9 | torque washer ring | 1 |
| 3-1-10 | ball $\Phi 5$ | 12 |
| 3-1-11 | type adjusting ring assy | 1 |
| 3-1-11-1 | type indicator | 1 |
| 3-1-11-2 | type adjusting ring | 1 |
| 3-1-12 | output shaft assy | 1 |
| 3-1-12-1 | output shaft | 1 |
| 3-1-12-2 | bearing 6801 | 1 |
| 3-1-12-3 | washer | 1 |
| 3-1-12-4 | bearing 6800 | 1 |
| 3-1-12-5 | impact conversion block | 1 |
| 3-1-12-6 | impact spring | 1 |
| 3-1-12-7 | top impact block | 1 |
| 3-1-13 | lower impact block | 1 |
| 3-1-14 | tap position rod assy | 1 |
| 3-1-14-1 | tap position rod | 1 |
| 3-1-14-2 | speed adjusting support | 1 |
| 3-1-15 | torque adjusting pin | 6 |
| 3-1-16 | gear box front cover | 1 |
| 3-1-17 | spindle lock fixing ring | 1 |
| 3-1-18 | spindle lock block | 1 |
| 3-1-19 | spindle lock pin | 6 |
| 3-1-20 | spindle lock support | 1 |

| | | |
|--------|-----------------------|----|
| 3-1-21 | 3rd inner gear ring | 1 |
| 3-1-22 | 3rd running gear | 5 |
| 3-1-23 | washer | 1 |
| 3-1-24 | gear box back cover | 1 |
| 3-1-25 | 3rd driving gear | 1 |
| 3-1-26 | 2nd driven gear | 4 |
| 3-1-27 | 2nd inner gear ring | 1 |
| 3-1-28 | 2nd driving gear | 1 |
| 3-1-29 | 1st inner gear ring | 1 |
| 3-1-30 | 1st driven gear | 4 |
| 3-1-31 | back cover washer | 1 |
| 3-1-32 | type adjusting spring | 2 |
| 3-1-33 | washer | 1 |
| 3-2 | brush rotor assy | 1 |
| 3-2-1 | screw 4*8 | 3 |
| 3-2-2 | gear box cover | 1 |
| 3-2-3 | small gear | 1 |
| 3-2-4 | brush rotor | 1 |
| 4 | rod spring | 2 |
| 5 | motor fixing ring | 2 |
| 6 | shift fork | 1 |
| 7 | light cover | 1 |
| 8 | nut M4 | 2 |
| 9 | right housing | 1 |
| 10 | screw PB3*14 | 14 |
| 11 | brush PCB | 1 |
| 11-1 | PCB box | 1 |
| 12 | speed control switch | 1 |
| 13 | battery foot | 1 |
| 14 | left housing | 1 |
| 15 | belt fastener | 1 |
| 16 | screw PW4*12 | 1 |
| 17 | belt | 1 |
| 18 | bolt M8x115 | 1 |
| 19 | side handle | 1 |
| 20 | battery | 2 |
| 21 | charger | 1 |
| 22 | BMC | 1 |